

How to Check for Leaks



Continuous leaks from a 1/16th inch crack in a water pipe can cause water waste of almost 25,000 gallons in one month. A dripping faucet can waste 3 gallons per day or almost 1,000 gallons per year. Detecting, locating, and repairing a water leak not only saves water but money too.

Water leaks come in many sizes and varieties. Some water leaks require plumber expertise and others can easily be repaired by a resident. The most common sources of water leaks are service line ruptures, sprinkler system line cracks, toilets, and faucets. Below are a few tips to try to determine if you have a leak.

Utilizing The Meter to Identify Leaks

RTMAAC meters are extremely accurate and have built-in features to detect the smallest amounts of usage. To check for leaks, turn off all faucets and equipment that use water.

Sensus iPearl Meters

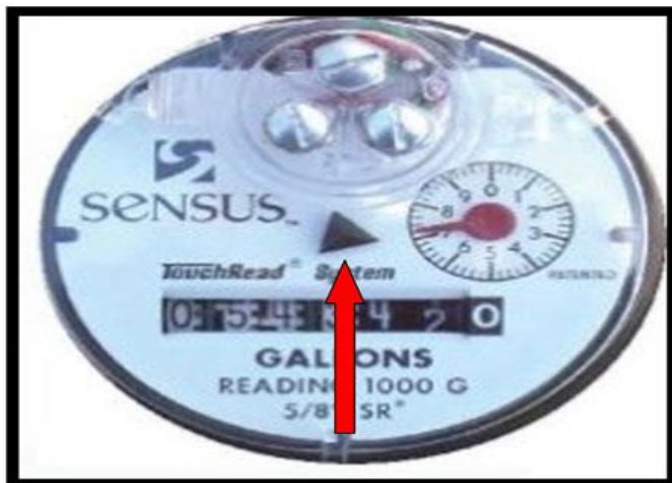
In order to detect a leak with our Sensus iPearl meters, lift the lid on the actual meter to expose the digital readout register. A "+" sign in the round circle below the numbers will indicate water flowing through the meter. Also, the iPearl is very sensitive so you may notice an increasing number count on the right hand of the decimal point of the digital register. If you notice one or both of these and you are certain water has been turned off, then you most likely have a leak.



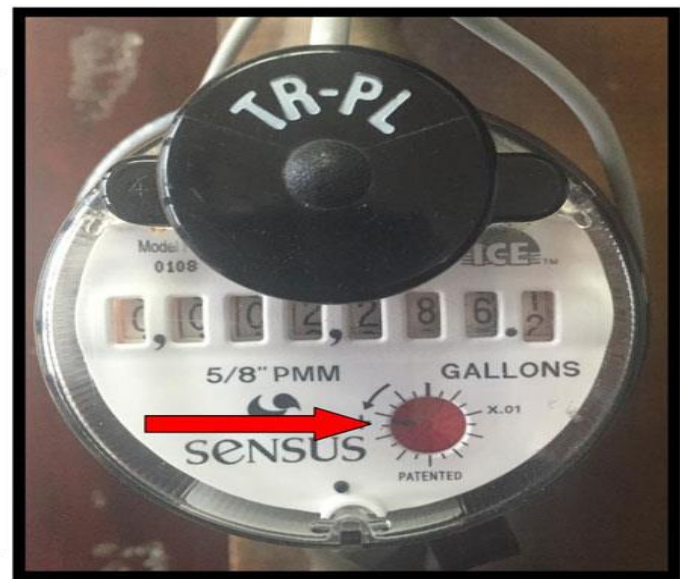
Sensus SR2 Meters

It may be necessary to wipe off the face of the meter in order to see it clearly. This meter is equipped with a "test" hand that rotates in a clockwise direction when water is being used. Observe the "test" hand very closely. If there is any movement in the "test" hand and you are certain water has been turned off, most likely there is a leak.

- On meter "A" the test hand is a black triangle above the read numbers.
- On meter "B" the test hand is a small red knob located in the bottom right-hand corner of the meter.



METER "A"



METER "B"

Other Methods

Check your toilets

- Add Leak Detector tablets, available at the RTMAAC office, or a few drops of food coloring in the tank of the toilet.
- Wait several minutes.
- If any color is seeping into the bowl, then the toilet is leaking.

Check your yard

- While slowly walking the trench line between the meter and your home, be aware of any "squishy" areas.
- Be aware of any areas of the yard that are unusually green.